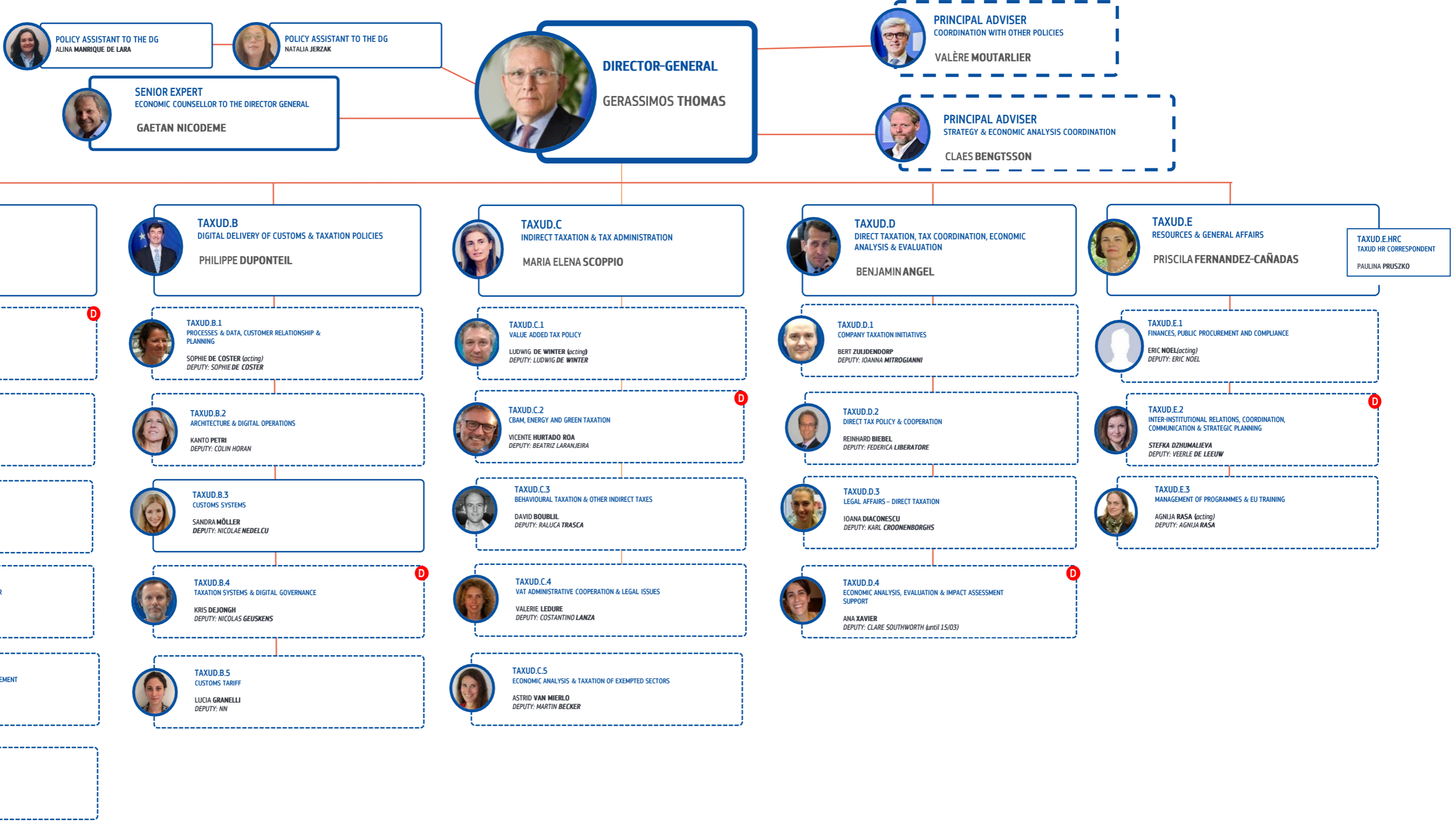




COMMISSIONER : MAROŠ ŠEFČOVIČ



COMMISSIONER : WOPKE HOEKSTRA



D DEPUTY TO THE DIRECTOR

SECONDED MANAGERS AND ADVISERS: PATRICE PILLET, SECONDED TO THE CABINET OF COMMISSIONER HOEKSTRA AND MARIANA HRISTCHEVA, SECONDED TO ECA